

Wadsworth

parish plan

Building the Future

Wadsworth parish plan

REPORT INDEX

Building the Future	3
Community	6
Children & Young People	10
Environment	14
Transport	19
MAP	Inside back cover

Contact the Parish Plan Committee
to find out what is happening
Leave a letter at Wadsworth
Community Centre
Email PPC@WadsworthWestYorkshire.org
website: <http://www.WadsworthWestYorkshire.org>
See local notice boards

ABBREVIATION PARTNER KEY

C'dale MBC	Calderdale Metropolitan Borough Council
C'yside Agency	Countryside Agency
Cald Com F	Calderdale Community Foundation
Com Tr C	Community Transport Calderdale
Com S Gr	Community Services Grant
defra FWag	Farming and Wildlife advisory group
H – Royd TC	Hebden Royd Town Council
P Plan C	Parish Plan Committee or any successor
P Trans Gr	Parish Transport Grant
Ru Tr P'ship	Rural Transport Partnership
RoW officer	Rights of Way improvement officer, CMBC
Wads C Cen	Wadsworth Community Centre
Wads C Ass	Wadsworth Community Association
Wads PC	Wadsworth Parish Council
W Y Police	West Yorkshire Police
YRCC	Yorkshire Rural Community Council
OTP School	Old Town Primary School
H'stall PC	Heptonstall Parish Council

TIMESCALE PRIORITY KEY

High	Direct impact on the Wadsworth Action Plan or Health and Safety (including Disability) related
Medium	Would bring direct benefit to a significant section of the community
Low	Would bring direct benefit to a small section of the community

Wadsworth parish plan

Building the Future

This plan is the result of many meetings, a camera project, a detailed household survey, hard work and helpful grants from the Countryside Agency and Wadsworth Parish Council. Over a year ago, a public meeting called by the Parish Council to see if there was support for developing a Village Plan was addressed by an energetic Chris Barker, from the Yorkshire Rural Community Council. Lots of you came to the meeting and gave your views and support. A committed group was formed to lead the process.

We wanted our community to be able to take action to help ourselves by having facts at our fingertips so that we could effectively apply for grants and get support for local projects.

In May last year, an impressive 33% of households completed the Vital Villages Questionnaire. This project arose from meetings with the Countryside Agency and Wadsworth Parish Council, with the aim of finding local views, statistics and background of Wadsworth Parish. We wanted to know what you liked and did not like about Wadsworth, what is needed, what can be changed, what you love about the place and what drives you round the bend. We launched our newsletter "THE WADSWORTH WADYACALLIT"

– hope you have enjoyed it and please keep sending us your news as we are also looking at developing and improving The Plan.

We found that many people do not know Wadsworth's geography and boundaries, so we have included a map to help you understand the plan.

Several items in the plan concern Wadsworth residents but are outside the parish. The Parish Council will seek the co – operation of neighbouring councils to achieve these aims. We have tried to be realistic about funding for our aims, but if you know of a possible source of funding that we have overlooked please let us know.

The Plan is just a start – let us use it to build a happier, healthier community, to forge new links and connections in our Parish. The Plan reflects your views and we hope you enjoy reading it. Please get in touch and feel welcome to come to a meeting and join in the action.

Wadsworth Parish Plan Committee

July 2004



Wadsworth parish plan

An Introduction to Wadsworth

The Parish of Wadsworth is divided into three distinct communities, Midgehole, Pecket Well and Old Town. The hillside settlements of Pecket Well and Old Town long predate the existing buildings, and the location of Bronze Age sites on the moors suggests the main road through the villages towards Midgley could be of great antiquity. In more recent centuries the economy of the parish has been very much involved with sheep farming and the woollen and clothing industries, although mining, quarrying and more modern manufacturing have also featured in its economic history.

Midgley could well be called the gateway to Hardcastle Crags, one of the county's most celebrated beauty spots. The deep valley extends from Midgley to the headwater at Widdop. In the middle of this natural beauty is Gibson Mill, an early 19th century mill currently being renovated by the National Trust as the only building in the country powered entirely by natural energy. Its electricity will be generated by water and by solar panels on the roof, its heating by biomass from the woodland and its drinking water will be from natural springs. The mill was built in the 1800s for the production of cotton cloth, and so continued until the end of the 19th century. Since then it has seen action as a dance hall and a roller skating rink, but has not been in regular use since the end of the second world war.

Pecket Well, with Shackleton, is the last community before reaching the Calderdale border. Although there are several references in old newspapers to 'Beckett Well' there is no sound support for this derivation of the name, which seems to have arisen from local oral tradition. The Act of Parliament to build the Keighley Road, which passes through the village, was passed in 1814 at the estimated cost of just over £7000. In places the road is over 1400 ft above sea level. and can suffer some of the worst weather in the Parish.

Not so many years ago Pecket Well had its own village shop, one of the hundreds of tiny rural Co-ops, but sadly the village is no longer large enough to sustain a shop. The premises are now part of Pecket Well College, which provides specialised teaching for people who might otherwise find mainstream education difficult. There were also two clog shops, a barber and a smithy. Most important of all, there was a village school, but all have now gone.

The last important building to close was Pecket Shed, built about 150 years ago, which finally ceased weaving its fine quality fustian quite recently. It is planned to redevelop the building for residential use. The Robin Hood pub is the only pub in Pecket Well.

Old Town, which incorporates Chisley, is mentioned in The Domesday Book of 1086. Old Town Hall is the oldest dwelling in the parish; records show that there was a timber building on the site in 1336. The present house was built around 1610, and has a large porch with a Tudor archway, mullioned windows and decorative chimneys. It is believed that there was a secret passage leading from the kitchen through the cellar and emerging in Pecket Wood. A document of 1610 refers to "a door to the north, with a lock, in the kitchen chimney and a great bar of iron seven feet in length, and two bars, either of them 2 ft in length". The site of this door can still be seen in the fireplace of the present dining - room.

Two farms, Old Town Farm and Crabtree Farm, were owned by wealthy clothiers in the early 1600s. Later, both farms became the property of the Listers, who added weavers' cottages for handloom weaving.

The village naturally had a pinfold for collecting straying animals, also a dungeon and stocks.

Wadsworth parish plan

Old Town Mill was owned by Cousins and Mitchells who started the wool combing business, whilst Hoyles owned Acre Mill for cotton weaving. The two mills were involved in costly legal battles over water rights. Two hundred years ago the handloom weavers, scattered in cottages across the hillside, were described as somewhat wild and uncouth! From the 1920s, Acre Mill had several owners; its final use was by Cape Asbestos, and the factory site has now been cleared. After 1750 there were as many as twenty coal mines. Also extracted in the area were minerals, stone, slate, flags, and claybrick earth.

Moving to today, Old Town has a fine cricket club, a bowling club that celebrates its centenary in 2004, a Women's Institute and an active Community Centre. There are two churches, Baptist and Methodist, but no Parish Church; the parish of Wadsworth came under the ecclesiastical parish of Heptonstall – perhaps the distance involved was contributory to the 'wild and uncouth' description of some of the parish.

The village also has an excellent primary school, which is just over 100 years old, and an amazing village shop and post office which disproves the adage that 'you can't get a quart into a pint pot!'

The whole village is bordered from the north by miles of high moorland, offering fresh air and space in abundance. To the south lies Hebden Bridge, and the main modern routes out of the Calder Valley, east to Yorkshire and west to Lancashire.



These photographs show views from a walk around the Parish boundary » » »



Wadsworth: the community

Is Wadsworth a friendly and active place in which to live, with a good community spirit?

In the questionnaire sent out last year we tried to discover how people currently felt about the community that they live in and what would encourage them to participate more in community activities. The comments on the community, shown below, are yours together with some thoughts of achieving what you would like.

Because of the large and rambling nature of Wadsworth parish, people tend to view themselves as belonging to their immediate neighbourhood i.e. Old Town, Pecket Well, Midgehole, Shackleton, etc. rather than as part of the larger community of Wadsworth. This creates problems when trying to set up facilities which can be used and enjoyed by all within the parish. It would not be viable to create resources in each small local community away from the main areas of population.

The questionnaire looked at three main elements **community spirit**, **community facilities** and **community activities** available to all.

Community Spirit

- Over 90% of replies said that people in the area were friendly and 67% found them willing to help. However, slightly less than half (48%) felt there was a strong community spirit and some 30% indicated that 'people moving in and out of the area' was regarded as a serious problem.
- Some of the problems identified were: – conflict between the old and young, drug/alcohol abuse and in some cases poor neighbourly relations. There were several comments that we should all try to be 'more neighbourly'.
- The Wadsworth Wadyacallit, our new local newsletter, has been welcomed and praised. It keeps people informed and more use could be made of it to promote community activities. Some felt that a better local spirit could be created through more events to bring people together – ideas and volunteers please!

- Wadsworth is widely regarded as a relatively safe and crime free area but, even so, some 54% of all respondents would be interested in joining a Neighbourhood Watch Scheme although some 36% would not be interested. A Farm Watch scheme was also mentioned.
- Quite a number of people would like to see more local or community policing introduced but it was felt that this is outside the remit of the Parish Plan.

Community Facilities

- The Community Centre at Old Town is the main facility available for indoor activities. It can be hired by anyone. This hire currently represents some 40% of The Community Centre usage.
- Only about 10% of people replying use the Centre more than 2 – 3 times per month and some 37% never go there at all. Almost half of people replying to the questionnaire use the Centre sometimes. However, many do not know what goes on there or when it is open.
- People thought the Centre could do with some investment to make it more inviting, have better sound insulation, later bar licences and more entertainment.
- Other suggestions included a cyber café/milk bar for younger people, a sports hall with gymnasium and racket sports areas.
- Concerns were expressed about keeping local pubs open, such as the Robin Hood in Pecket Well, as they are seen as the only local meeting places outside Old Town. Links with Midgehole WMC were suggested, as were pub shops selling basic supplies.
- Suggestions were made by some for a café/local shop in Pecket Well to become a focal point for this part of the parish. Other comments sought to widen the range of activities at Pecket Well College.
- More allotments were requested and plenty of space will be available alongside the Pecket Well playground. Ask your local Parish Councillor for details, if you want to set up an allotment.



- New/repaired equipment for the playgrounds at Old Town and Pecket Well were asked for. Two new pieces of equipment will be introduced at the playground at Pecket Well. Suggested improvements at Old Town village green include levelling of the green through rolling and an external cycle track.
- The facility most requested was for a swimming pool but this has to be a non – starter for Wadsworth; it cannot even be justified for Hebden Bridge.

Community Activities

- This part of the survey produced the largest number of responses in terms of written comments. The majority of suggestions for increased indoor activities could use the Community Centre at Old Town, so making much better use of this facility.
- Current activities at the Old Town Community Centre, and which anyone can attend, are: – quiz nights twice a week, Wednesday luncheon club, monthly sequence dancing, Youth Club and Toddler group have both been recently re – instated. There is also a theatre group, senior citizens' club, crown green bowling and pool.
- Some thought that activities and events, exciting enough to encourage both adults and children, were needed.
- Some of the suggested new indoor activities include: dancing lessons, yoga and Pilates, aerobics/keep fit, adult education classes, discos, local history society, book club and leisure club.
- Suggested new outdoor activities covered : – cycling and road safety, hiking/orienteering and pony trekking.
- It was felt by many that better publicity of all events and activities would result in greater participation. All the new activities suggested would need an enthusiastic person to lead them with possible assistance in some cases. Are YOU willing to help introduce new activities/classes – if so, why not volunteer and see if there are sufficient numbers to make it worthwhile.

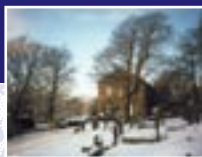




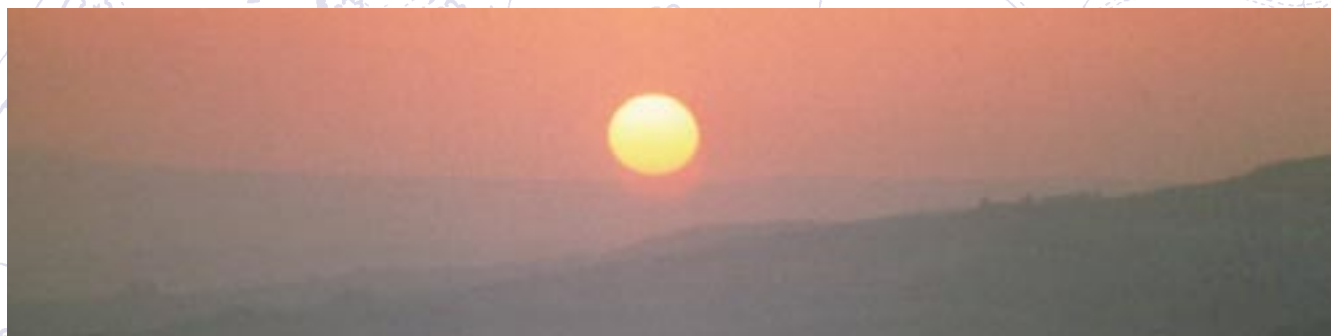
Wadsworth parish plan community



	AIM	ACTION	PARTNERS	POSSIBLE FUNDING	PRIORITY/ TIMESCALE
C1	Ensure continuity (bi – monthly) of local news-sheet – Wadsworth Wadyacallit	Expand numbers involved in news – sheet production	P Plan C	Wads P C	High July 04 Ongoing
C2	Improve communication of Parish Council meeting dates and decisions	Use the Wadsworth Wadyacallit and internet in addition to formal notice board postings	P Plan C Wads P C	Wads P C	High Aug 04 Ongoing
C3	Create web site at www WadsworthWestYorkshire.org	Decide style and content, appoint webmaster	P Plan C	Parish Plan	High Sept 04 Ongoing
C4	Neighbourhood Watch Schemes	Contact local police and set up meeting for those interested in creating local schemes	P Plan C Wads P C W Y Police	W Y Police	Medium Dec 04
C5	Utilise Community Centre (W.C.C.) More people, more events	Improve siting and visibility of notice boards with info. Seek out leaders for additional activities requested	Wads C Ass P Plan C Wads P C	Users Grants according to activity	Medium Sept 04 Ongoing
C6	Improve sound insulation of Community Centre	Determine if any grants are available	Wads C Ass Wads P C		Medium July 05
C7	Build a Sports Hall at or near Wadsworth Community Centre. To include cyber cafe/milk bar	Confirm demand, examine options for site and explore possibilities for grants/ financial aid	P Plan C Wads P C Wads C Ass		High June 05 Ongoing



AIM	ACTION	PARTNERS	POSSIBLE FUNDING	PRIORITY/TIMESCALE
C8	Improve facilities on Old Town and Pecket Well playing area/ green	Level surface of Old Town green through rolling. Provide cycle track round Old Town Green. Provide fenced off picnic areas	P Plan C Wads P C	High July 05 Ongoing
C9	Provide easier access to local swimming pool(s)	Assess needs for the provision of regular transport to local pools	Wads P C CTC	Low May 05 Ongoing
C10	Expand range of family activities available, to cover all areas of the parish	Determine types of activities and seek leaders for activities chosen	P Plan C	Medium May 05 Ongoing
C11	Improve traffic calming measures through Pecket Well, Midgehole and Old Town	Organise meeting with local residents and then approach Calderdale MBC & Highways Dept	Wads P C Ward Cllrs C'dale MBC	C'dale MBC High Dec 05
C12	Provide off road parking in Pecket Well to enable pavements to be increased	Organise meeting with Pecket Well residents and then approach local land owners for land	P Plan C Wads P C C'dale MBC	C'dale MBC High Dec 05



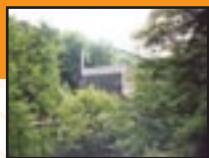
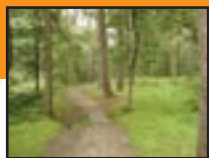


Wadsworth: youth

Children, Childcare and Youth Activities in Wadsworth
Following the results of the recent questionnaire the following areas were of concern to respondents:



- Over 46% said they would like nursery provision in the area. Whilst it would be difficult to provide this in the existing facilities at Old Town Primary School there remains the possibility of using the Community Centre for this provision.
- The Out Of School Children's Club (OOSCC) was used by over 20% of respondents but a high percentage (36%) thought the school holidays were problematic. The OOSCC are hoping to run a scheme over the summer holidays. For further information please contact OOSCC, at the Community Centre.
- 66% of respondents thought that a Youth Club would be beneficial to the community. In February 2004 the Youth Club re – started at Wadsworth Community Centre.
- The local parks and playgrounds in Wadsworth were very popular with children and adults. Requests for a skateboard area, basketball court, a level football pitch and additional and improved play equipment were voiced. Recently the Pecket Well playground has re – opened following the work at Carr Head. A basketball court has already been erected here and new equipment is to follow over the summer. A basketball net will appear shortly on Old Town Green. Currently, there are no plans for a skateboard area in Wadsworth, although, as a need has been identified by this survey, this may change.
- General improvements to the parks have been identified by this survey, these include fencing of play areas, safety signage, benches and flower beds. Waste and dog fouling bins were a popular request.
- Concern was raised over the designated play area promised by Britannia Homes on the Chiserley Gardens estate. This work has not been done by Britannia and the area is now in disrepair. This land could provide a safe area for children to play, away from the roundabout. Wadsworth Parish Council are aware of this unfortunate situation and are currently liaising with the developer on this issue, but the support of interested parties is welcomed. Please contact Wadsworth Parish Council for further information.
- 56% of respondents liked the idea of a local football club with 45% considering that a climbing wall and access to computers were important considerations.



Wadsworth parish plan children & young people

AIM		ACTION	PARTNERS	POSSIBLE FUNDING	PRIORITY/ TIMESCALE
Y1	Nursery provision	Identify suitable premises and lobby Calderdale Education Department.	Wads P C C'dale MBC O T P School	C'side Agency C'dale MBC Yorks Fwd	High Sep 04
Y2	Support OOSCC to run holiday scheme	Advertise scheme in newsletter	OOSCC, O T P School Wads C Cen P Plan Com	C'side Agency C'dale MBC Yorks Fwd	Medium July 04
Y3	Support newly established Youth Club	Advertise in newsletter	Wads C Cen P Plan Com C'dale MBC	C'dale MBC Yorks Fwd Wads P C	High May 04 Ongoing
Y4	Encourage new and improved facilities on playgrounds	Support Wads Parish Council on provision of new equipment	Wads P C P Plan Com C'dale MBC	C'dale MBC Yorks Fwd Wads P C	High July 04 Ongoing
Y5	Provide and maintain park benches, fences, signage and flower beds,	Support Wads Parish Council on provision of new equipment	Wads P C P Plan Com C'dale MBC	C'dale MBC Yorks Fwd Wads P C Lottery	High Sept 04 Ongoing
Y6	Provide and maintain play area on Chiserley gardens estate	Lobby Britannia and Calderdale Planning Dept. Encourage local support.	Residents Wads P C P Plan Com C'dale MBC	C'dale MBC Britannia Ltd Yorks Fwd Wads P C	Medium Apr 05 Ongoing
Y7	Establish local sporting activities (football team)	Provide support by purchasing necessary equipment	Wads P C P Plan Com	C'dale MBC Yorks Fwd Wads P C	Medium Dec 04 Ongoing





Wadsworth *our parish*

117
2.490

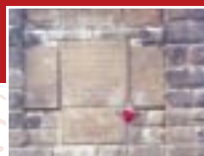
112
1.138

107
2.493

Chisley Stile
Chisley

106





Walker Lane Methodist Church

The Methodist church at Walker Lane was built 140 years ago and is still open to serve the community every Sunday morning at 10:30.

Work on the building and the redecorating of the church are currently being done thanks to the local people who have donated and fund – raised to generate the necessary money. Future work will include provision of a disabled toilet and improving disabled access.

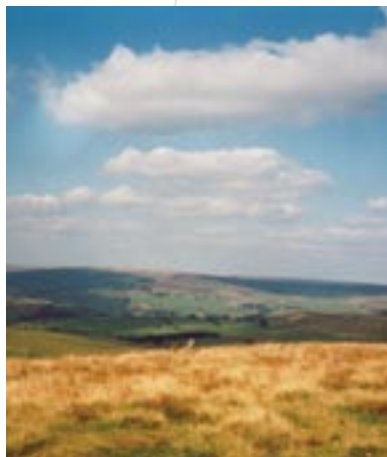
Church activities include special services throughout the year i.e. harvest festival, carol services, family services, spring and Christmas fayres and fellowship groups. These are open to everyone and, as always, help is gratefully received.

The church can be seen on the hillside coming into Hebden Bridge from Todmorden and the church members hope that it will continue to be a landmark that will stand testament to the faith of its past, present and future congregations.





Wadsworth: the environment



Wadsworth – The Natural Environment

"The Pennines thrill with a powerful, special beauty. Out of some old neglected industrial town, you may climb a hill and be in a world that seems pristine, utterly untouched. In the ever-changing light, the shifting peat bogs that are as formless as putty seem the soft and shapeless mass of the earth before anything was created on it."

Glyn Hughes. *Millstone Grit. A Pennine Journey*

Wadsworth is the second largest parish by area in England, and is a beautiful part of the South Pennines. It includes the high uplands of Widdop and Wadsworth Moors to the north, Midgley Moor to the east, the lovely little valley of Crimsworth Dean, and the fine woodland of the National Trust property at Hardcastle Crag to the west of Hebden Water.

Calderdale Council has recognised the most important landscapes of the district by designating them as a Special Landscape Area (SLA). Wadsworth lies within the SLA. The moorland in the parish is recognised and protected nationally as part of The South Pennine Moors SSSI (Site of Special Scientific Interest). It is also recognised as being of international importance by its designation as a Special Protection Area (SPA), and a candidate Special Area of Conservation (cSAC) under the European Community Birds and Habitats Directive. Crimsworth Dean is another SSSI, and Hardcastle Crag is a Site of Ecological and Geological Interest (SEGI). There can be no doubt that Wadsworth is a very special place in which to live.

The ecology of the moorland, with its blanket peat bog holding a large variety of invertebrates, makes it an ideal habitat for upland birds, some of which are particularly rare.

Species which breed here include:

- golden plover, red grouse, dunlin, twite, snipe, skylark, lapwing and curlew. The moors also provide a rich hunting ground for kestrels, peregrine falcons, merlins, and short-eared owls.

Hardcastle Crag estate totals 415 acres of mixed woodland, most of which was planted by the Savile family in the 1870's, although there are some remnants of ancient woodland and some more recent conifer planting. The Crag is valued for the beautiful scenery of their

steep-sided, boulder-strewn, wooded valleys, and the streams and springs that are surrounded by meadows and open moorland. The Crag is well known for the colonies of northern hairy wood ants, whose huge mounds can be seen throughout the dense conifer plantations, and the floor of the woods sometimes seems to be alive as the ants move from their feeding sites back to their nests.

Apart from the ants, the Crag provides a rich habitat for a wide range of woodland birds, including kingfishers, green woodpeckers, cuckoos, and pied flycatchers. There is also a good range of plants, invertebrates, and mammals, the largest of which is the roe deer.

From the responses to the survey, it was noted that there is a lot of interest in the natural environment. It has been suggested that a Wadsworth Environment Group could be formed, with the aim of appreciating, enhancing, and protecting the countryside of the parish. If you would be interested in forming such a group, look out for details, which will be advertised in the newsletter and on posters around Wadsworth.





Wadsworth – the environment

The high number of responses to environmental questions in the survey shows that people in the Parish are concerned about these issues, and value the special landscape of Wadsworth.

Around 90% supported the protection of open spaces such as meadows, moorland and woodland. Footpaths, bridleways and green lanes were also highly valued as a means of accessing the countryside.

As well as the natural landscape, people were interested in the built environment. In answer to the question, "What type of new housing development would you find acceptable in your area?" 90% favoured conversions of existing buildings such as barns, derelict houses and mills. Small – scale infilling between houses received some support, (30%), as did houses for older people, (33%). Only 2% favoured the building of larger estates (over 12 houses).

In answer to questions about what spoils the environment, the following views were expressed;

- Poorly maintained verges (40%)
- Poorly maintained paths and pavements (38%)
- Dog dirt (65%)
- Litter/rubbish dumping (58%)
- Graffiti (44%)
- Motorbike riding (20.%)
- Un – maintained farmland (28%)
- Abandoned or badly parked cars (59%)

Questions about improving the environment elicited a good response, and there were also many written comments and suggestions.

These can be summarised as follows;

- 47% did not know about the provision of skips for garden rubbish, and 20% said these were always too full, or too far away.
- 64% support Kerbside collections.
- 60% would support recycling banks for glass, paper and cans.
- 58% would like to take part in a clear up of the area once or twice a year.
- 56% would like to become involved with environmental improvement schemes such as planting trees, flowers and bulbs, and controlling weeds such as ragwort and Himalayan Balsam.
- 72% had loft insulation but only 47% had hot water tank lagging.
- More benches to admire local views were requested in the written comments.
- Concern was expressed by many about the use of motorbikes and 4 – wheel drive vehicles on the moorland near the Mount Skip.



Wadsworth parish plan environment



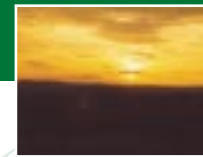
	AIM	ACTION	PARTNERS	POSSIBLE FUNDING	PRIORITY/ TIMESCALE
E1	To set up a Wadsworth Environmental Group (WEG.)	Call public meeting to enlist support and discuss ideas	P Plan C Wads P C YRCC	Cald Com F	High Aug 04
E2	To protect open spaces such as moorland, meadows, and woodland	Monitor planning applications affecting open spaces, oppose any detrimental ones	WEG Wads P C		Medium Ongoing
E3	Planting of trees, flowers and bulbs	Set up work parties of volunteers	WEG Tr'sponsibility Calder Future	Calder Future Tr'sponsibility	Medium Ongoing
E4	Ragwort and Himalayan Balsam control	Set up work parties of volunteers	WEG Landowners C'dale MBC Calder Future National Trust	C'dale MBC Calder Future National Trust	Medium Ongoing
E5	Clean up of area	Set up work parties of volunteers	WEG Wads P C Calder Future	Wads P C	Medium Ongoing
E6	To set up a walking group to provide organised walks in Wadsworth	Call public meeting to enlist support	P Plan C C'dale MBC WEG		High Aug 04
E7	To provide decorative benches around the Parish (See also Y5)	Design, produce, and install benches – 4 initially	P Plan C Wads P C National Trust	C'dale MBC Arts Council Lottery	Medium Sept 04 Ongoing
E8	Recycling	To provide collection points at Old Town and Pecket Well	Kerbside Wads P C C'dale MBC	Kerbside C'dale MBC	High May 05



Photographs taken along the Parish boundary walk end here

AIM		ACTION	PARTNERS	POSSIBLE FUNDING	PRIORITY/ TIMESCALE
E9	Quicker removal of graffiti, fly – tipping and abandoned cars	Publicise council hot – line in the newsletter	P Plan C C'dale MBC	C'dale MBC	High July 04
E10	To increase provision of skips for garden waste	To advertise dates and location of skips in the newsletter	Wads P C	Wads P C C'dale MBC	Medium July 04 Ongoing
E11	To encourage more energy – saving measures	To seek funding for subsidised low energy bulbs and hot water tank lagging	Wads P C Age Concern	Age concern	Low May 05
E12	To stop the use of motorbikes and 4 – wheel drive vehicles near The Mount Skip	To publicise that this is illegal, and to report incidents to the Police	WEG W Y Police Wads P C	W Y Police	Medium May 05 Ongoing
E13	To improve signage and condition of footpaths and bridleways	To identify problems on rights of way and to liase with Calderdale Council on improvements	Wads P C RoW officer C'dale MBC	C'dale MBC	Medium May 05 Ongoing
E14	To encourage the repair of dry stone walls and nature conservancy	Publicise defra Schemes Develop grant scheme for landscaping, nature conservancy and walling.	P Plan C C'dale MBC defra FWag	C'dale MBC defra Calder Valley Renaissance	Medium May 05 Ongoing
E15	Reduction of dog – dirt and litter on play areas and footpaths	To provide bins and notices on Old Town Green and Pecket Well play area	Wads P C C'dale Council	Wads P C C'dale MBC	High Aug 04 Ongoing
E16	To encourage home composting	To advertise Calderdale Council's scheme for subsidised compost bins.	P Plan C C'dale MBC Straight Recycling	C'dale MBC	High May 04 Ongoing



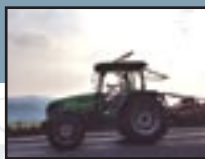


Wadsworth parish plan environment

Proposals for parish boundary furniture

Proposed designs for sculpture/seating to be placed at intervals along the parish boundary walk. Sculptural designs that both reflect and enhance the natural environment.





Wadsworth: transport & roads

TRANSPORT AND ROADS

Not surprisingly, the survey indicated that the car is the main form of transport. More than 70% of respondents use a car for shopping, work and attending hospital. Only 25% use a bus to go to the station. 15% regularly use buses, and of these 44% use the bus for shopping or local travel. 9% use the train regularly. More would use the train if the connecting bus service was reliable and there was an adequate evening service.

BUSES:

Hebden Bridgers: Great dissatisfaction with the unreliability of these services was expressed during their introduction last September. This led to a re – timetabling, resulting in an improved service and increased use. **Service 593:** The threatened withdrawal of this through service to Halifax was very unpopular, and after strong public protest has been retained by Metro for the present. There was a strong plea for better information at bus stops, such as large – print timetables and/or simple maps with journey times and stops. Better evening services are needed, and services timed to connect with valley services to Halifax.

FARES:

Short journeys such as Old Town to Hebden Bridge are perceived as too expensive.

ROADS:

A6033 Keighley Road: This section of road was cut into a precipitous hillside well before today's heavy lorries existed, and despite frequent repairs there are always fresh incidences of subsidence. This road received by far the highest expression of concern on the grounds of lack of safety and need for high maintenance. There should be, in the public domain, a well – rehearsed plan for emergency diversion of traffic. There was much concern about the absence of footways in Pecket Well. Not only do people have to push prams on the road, but

there are parked cars and poor sight lines. For drivers, 41% of respondents felt that this section was 'safe with caution', but 26% saw it as a cause for concern.

TRAFFIC IN WADSWORTH:

Much traffic centres around the Post Office, and this area attracted much criticism. There is no footpath at the Post Office and often congestion with parked cars, partly attributed to the school run. Occasionally the lack of gritting on Old Mill Ridge contributes to parking on Billy Lane. The mini – roundabout is highly unpopular, being largely unused and unusable. (Any calming function it might have could be achieved by installing a footpath in front of the Post Office).

JUNCTIONS

Of the 7 possibly dangerous junctions listed in the survey, the majority of respondents felt they were 'safe with caution', though a significant percentage saw them as a cause for concern, and some as actually dangerous. The Sandy Gate/Birchcliffe Road blind junction came first on the list of 'Very Dangerous'. The next most dangerous road was the A6033 through Pecket Well, with 40 respondents (22%) making this point. In Old Town, the Clough Hole bend, where there is no sight line and no pedestrian walkway, needs studying with a view to improvement.

ROAD SURFACES

Many minor roads suffer from erosion due to rainwater coming off the moors, which coupled with bad maintenance makes them hazardous, especially in wet weather. e.g.

- Lane Ends to Mount Skip, and Heights Road – Broken edges narrowing the road.
- Lee Mill Road and Old Town Mill Lane – Potholed.
- Dry stone walls at Nook Lane, Heights Road and Sandy Gate – stones on the road.



Wadsworth parish plan transport & roads

- Of 87 people commenting on "Roads in need of Maintenance", 36 gave Pecket Wood (A6033) as their first nomination.

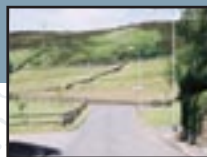
SPEED

- 130 respondents (66%) said traffic travelling too fast was a serious problem, with bad/illegal parking condemned by 78 (40%).
- Concern was expressed about Crimsworth Terrace on Midgehole Road. A 20mph limit on this road was suggested because of walkers and residents.
- Speed Limits: Over 60% thought that local roads are generally safe if used with caution. 49% thought speed limits too high, 43% that they were adequate.
- 51% requested a new 30mph sign on Akroyd Lane.

OTHER

- Unadopted Roads: Opinion was slightly in favour of having roads adopted, although a substantial minority preferred the current situation.
- Bridleways: 42% of respondents considered that bridleways were 'okay'

	AIM	ACTION	PARTNERS	POSSIBLE FUNDING	PRIORITY/TIMESCALE
T1	To review the situation regarding adoption of Lee Mill Road and other roads, to ensure that associated rights of way are maintained to a satisfactory standard and to enable residents to achieve their collective wishes with regard to adoption.	Arrange residents' meetings and record their views. Invite financial and legal advisers. Seek to prevent further deterioration of roads.	C'dale MBC H – Royd TC H'onstall PC	C'dale MBC H – Royd TC H'onstall PC	High May 05 Ongoing
T2	Better road warnings and speed control	Review of speed limits and other signs at Midgehole, Akroyd Lane, Parrock, Clough Hole, and Pecket Well	C'dale MBC	C'dale MBC	High Oct 04 Ongoing
T3	Get rid of Old Mill Ridge Mini – Roundabout, which is a danger to both children playing and to drivers leaving WCC	Persistently bring these dangers to the attention of the authorities. Organise a petition.	C'dale MBC Highways Authority Road Safety	C'dale MBC	Very high Dec 04



	AIM	ACTION	PARTNERS	POSSIBLE FUNDING	PRIORITY/TIMESCALE
T4	Provide a footway outside Post Office	Apparently pre – emptied by a scheme re “Safer routes to school”	C'dale MBC	C'dale MBC	Medium May 05
T5	Get a more reliable bus service with more buses in evenings	Review arguments for changing service, particularly in context of less car use.	METRO H – Royd TC	METRO	Medium Sept 04 Ongoing
T6	Adequate bus information is provided where it is needed	Display large print sensibly positioned departure timetables, with adequate lighting	METRO H – Royd TC	METRO Wads P C	High Sept 04 Ongoing
T7	Ensure that poor road edges and stone falls e.g. Nook Lane, Sandy Gate are reported promptly.	Have access to the road condition monitoring plan so that local people can know if defects have been reported and when repairs are planned.	C'dale MBC		Medium Oct 04 Ongoing
T8	Ensure that there is an emergency plan to deal with closed roads, that local people can have a say in its details, and that it is published and displayed	e.g. Walker Lane (which looks so inviting) should be signed as unsuitable Bus service changes should be pre – planned	Midgley residents C'dale MBC H – Royd TC	Wads P C	Medium May 05 Ongoing
T9	Create a paved path – friendly footpath from top to bottom of Pecket Well (not necessarily at the roadside)	Further survey of people's needs, feasibility study	Land owners C'dale MBC		Medium May 06g
T10	Involve Midgehole residents in Midgehole traffic problems	Have, consult on and publish plans to control and limit Midgehole traffic	C'dale MBC National Trust Residents	Wads P C	Medium Sept 04 Ongoing



Wadsworth parish plan transport & roads



	AIM	ACTION	PARTNERS	POSSIBLE FUNDING	PRIORITY/ TIMESCALE
T11	Make the Junction of Sandy Gate and Birchcliffe Road safer	Prevent uphill traffic within 1 m of Sandy Gate whilst traffic is emerging.	C'dale MBC H – Royd TC	C'dale MBC	High Sept 05
T12	Place better signing around the Mount Skip junction	Devise and implement complete signing scheme	C'dale MBC H – Royd TC	C'dale MBC	Medium Dec 04
T13	Improve visibility for and/or control of drivers at Clough Hole and the Hare & Hounds.	Painted footway; Directional priority or traffic lights. Mirror?	C'dale MBC Wads P C	C'dale MBC	High May 05

ACKNOWLEDGEMENTS

We want to thank the people involved in producing the plan and brochure who are:-

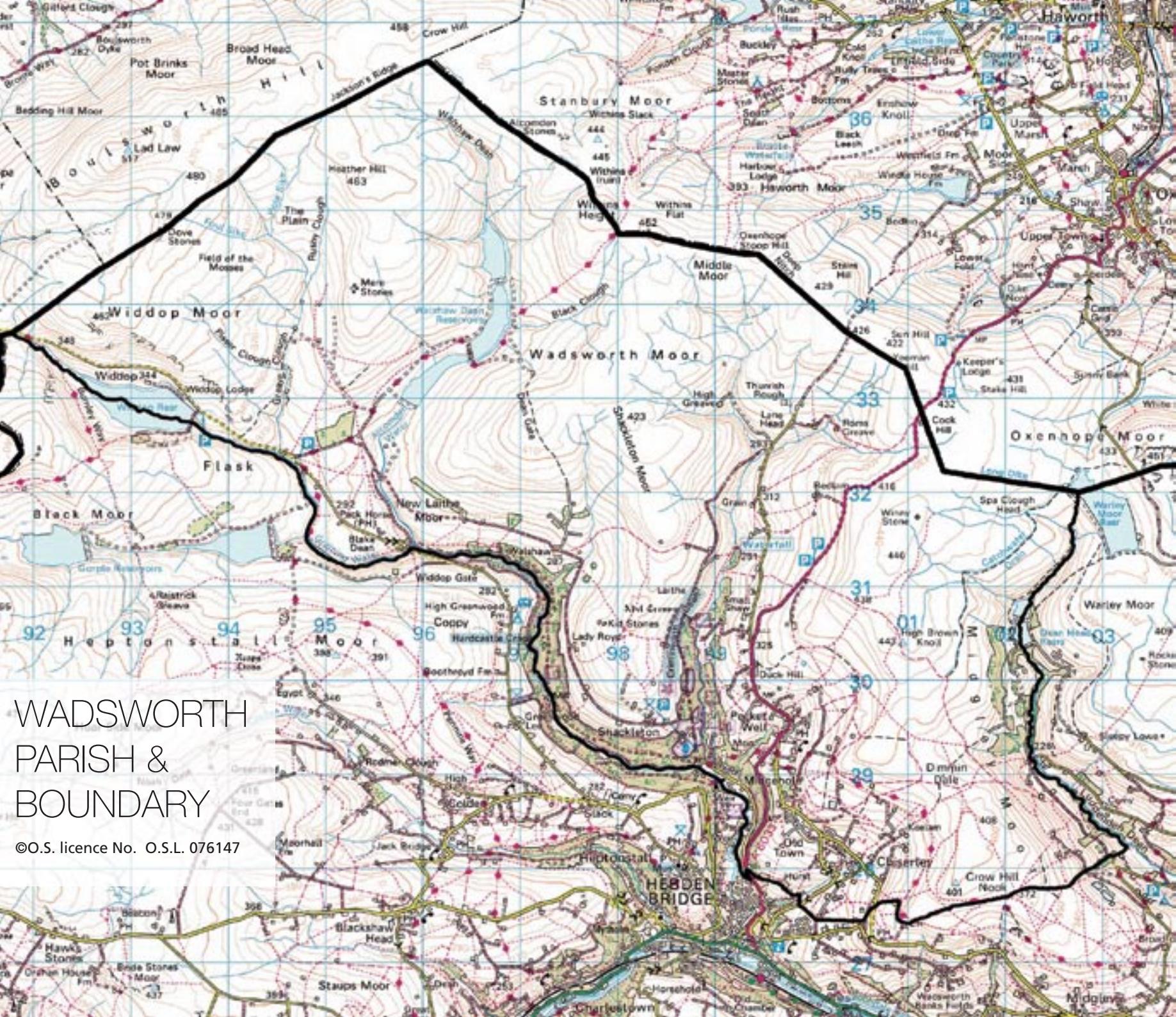
Gail Allaby	Chris Barker
John Billingsley	Stuart Bradshaw
Pat and Derek Bridges	Julie Cockburn
John Davidson	Richard Day
Rose Greenwood	Mike Harford (Map)
Gerard & Nola Hayhurst	Peter Hartley (Trog Photos)
David & Linda Holmes	Jerry Kastner
Frances Law	Mary Lawrence
Drew Marsh	John & Pat Marshall
Andrea Osbourne	Matthew Parker
Linda Redman	Mavis Ring
Bob & Yvonne Stubbs	Raphaella Summers
Rob Ward	Marcella Walsh
Lars Hansen and Blackshaw Parish Council	

The young Photographers
And everyone who has lived, worked and contributed to what we have today.

These maps, which were supplied by Calderdale Council under O.S. licence No. O.S.L. 076147, are copyright and may only be used for purposes connected with this plan or future developments of it.
Copyright also applies to the photographs.

Production of this plan was mainly funded by a substantial government grant obtained through the Countryside Agency, with the Parish Council having to provide only 5% of the total. A lot of unpaid volunteers' time also went into the study. Full details will be available from Wadsworth Parish Council.





WADSWORTH PARISH & BOUNDARY

©O.S. licence No. O.S.L. 076147

